

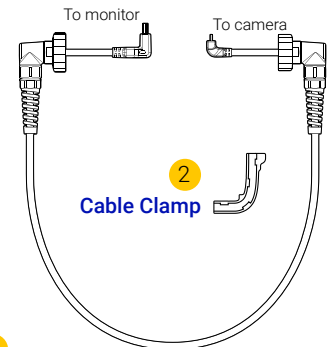
M24D3R140

M24 - HDMI Connector Type D - 140mm

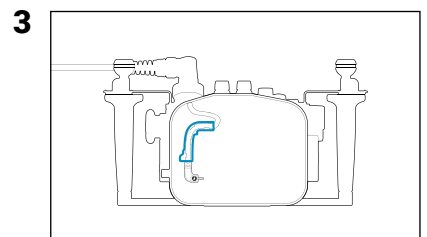
PN 25098

User Manual
HDMI 2.0 Cable

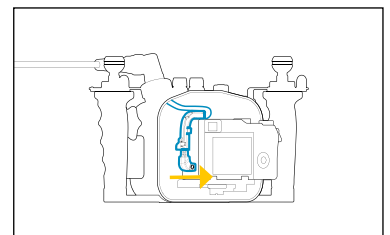
PACKAGE CONTENTS



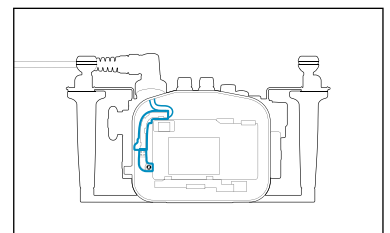
1
M24D3R140-M28A1R170 HDMI 2.0 Cable



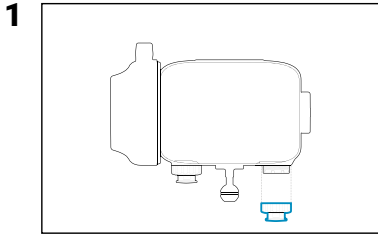
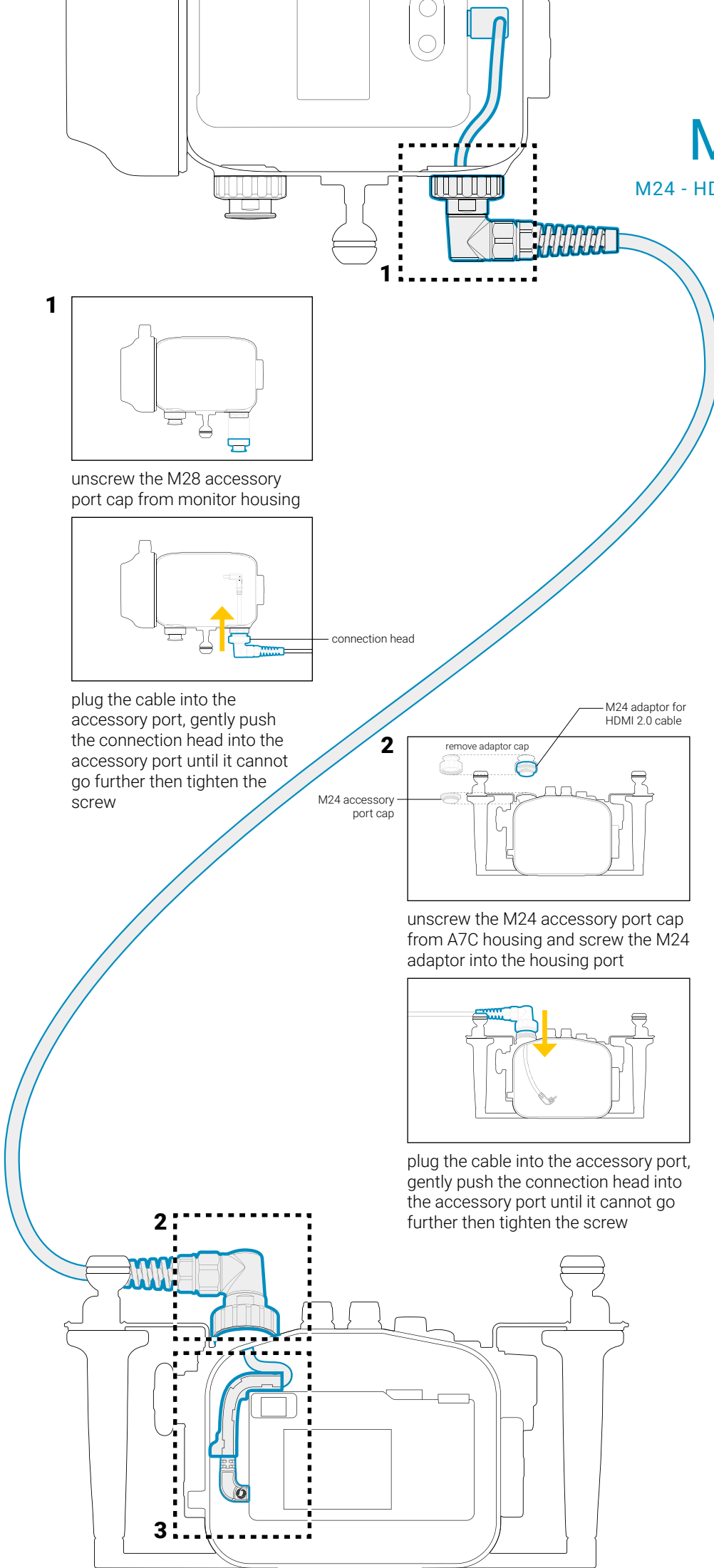
3
place the cable clamp as shown above



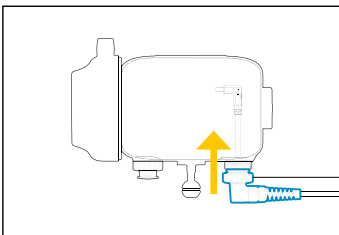
3
plug the cable into the HDMI micro jack on the camera with camera tray attached before sliding into the camera housing



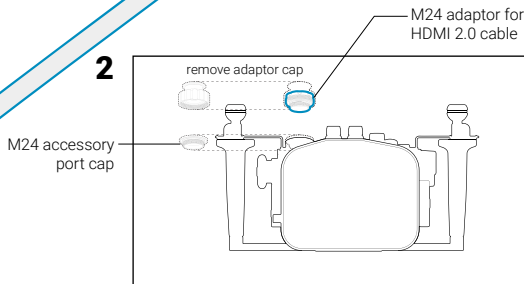
3
slide the camera tray into the housing along the tray rail then lock camera tray



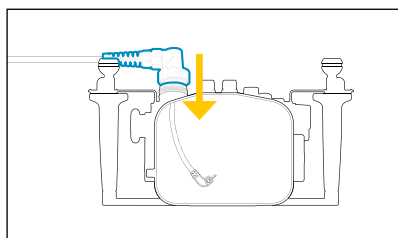
1
unscrew the M28 accessory port cap from monitor housing



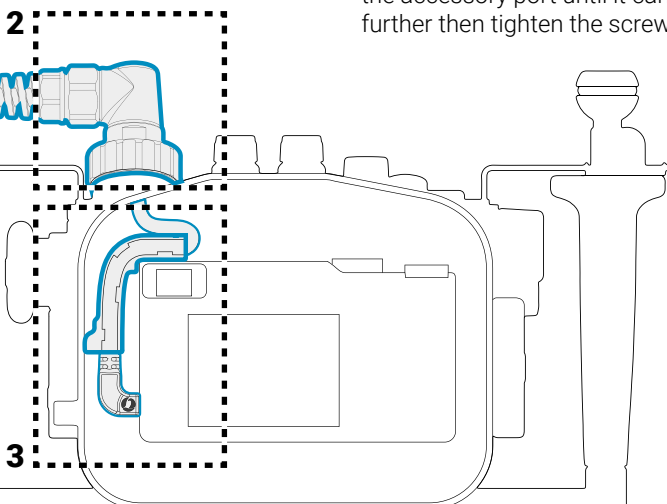
1
plug the cable into the accessory port, gently push the connection head into the accessory port until it cannot go further then tighten the screw



2
unscrew the M24 accessory port cap from A7C housing and screw the M24 adaptor into the housing port



2
plug the cable into the accessory port, gently push the connection head into the accessory port until it cannot go further then tighten the screw



WARRANTY

All NAUTICAM Housing Products and Viewfinders are warranted against any material and manufacturing defects for two years from the date of purchase for consumer use. NAUTICAM Optical Accessories are warranted against material and manufacturing defects for a period of one year, and HDMI & SDI cables carry a year warranty.

This warranty only applies to products purchased from authorized NAUTICAM dealers and does not extend beyond the original retail purchaser.

To return your product for service, please contact your regional authorized service center(s). Please note that this warranty only applies when the product is purchased in the territory where the service center is located.

NAUTICAM accepts no liability for any damage to and defects of the products caused by improper use and/or poor maintenance; it is the responsibility of the owner to carefully follow the instructions in our manuals.

NAUTICAM does not hold responsibility for damage, of any nature, to any equipment used with and/or placed within our products.

NAUTICAM accepts no liability for any loss of captured images or the inability to capture images even if it is due to the malfunctioning of our products.

Unauthorized modifications and/or repairs of our products will automatically invalidate the warranty.

Nauticam International Ltd.

Rm 2203, CCT Telecom Bldg,
11 Wo Shing St,
Fo Tan,
Hong Kong

Tel. +852 - 26902711
Fax. +852 - 26909778
URL. www.nauticam.com
Gallery. www.nauticam.smugmug.com

IMPORTANT INSTRUCTIONS

Do not place excessive stress on your HDMI & SDI cable connector.

Do not bend or twist your HDMI & SDI cable.

SPECIFICATIONS

Dimensions

Outer Diameter	7 mm
Total Cable Length	1000 mm

Depth

Rating	150 m
--------	-------