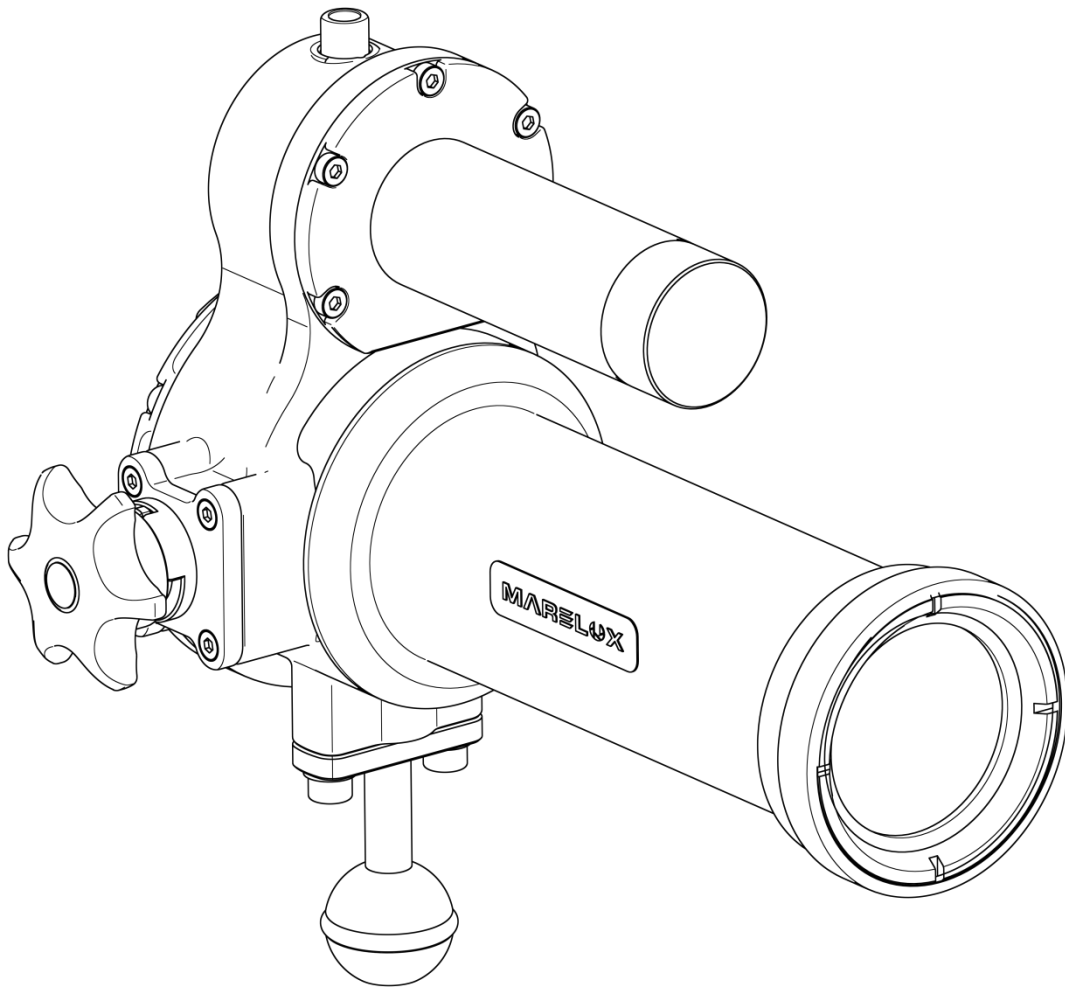




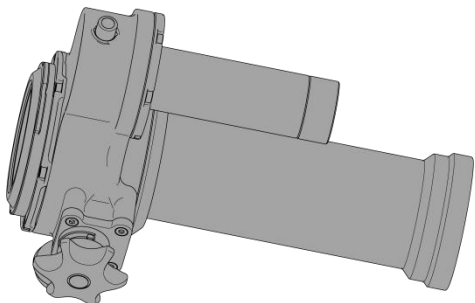
SOFT(Smart Optical Flash Tube)For Retra Flash Pro X



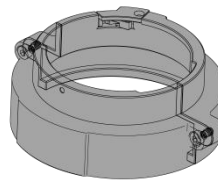
User Manual

Please read this user manual carefully before starting to use the product, and use the product properly based on the thorough understanding of this user manual.

Package Contents



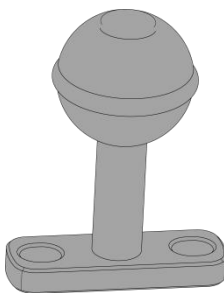
SOFT Main Body



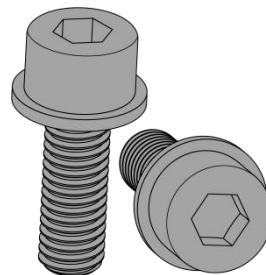
Dock for Retra Flash Pro X



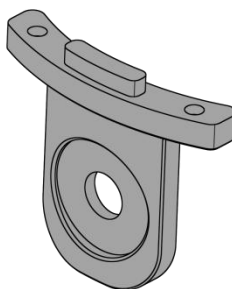
O-Ring*2



Mounting Ball



Screw *2

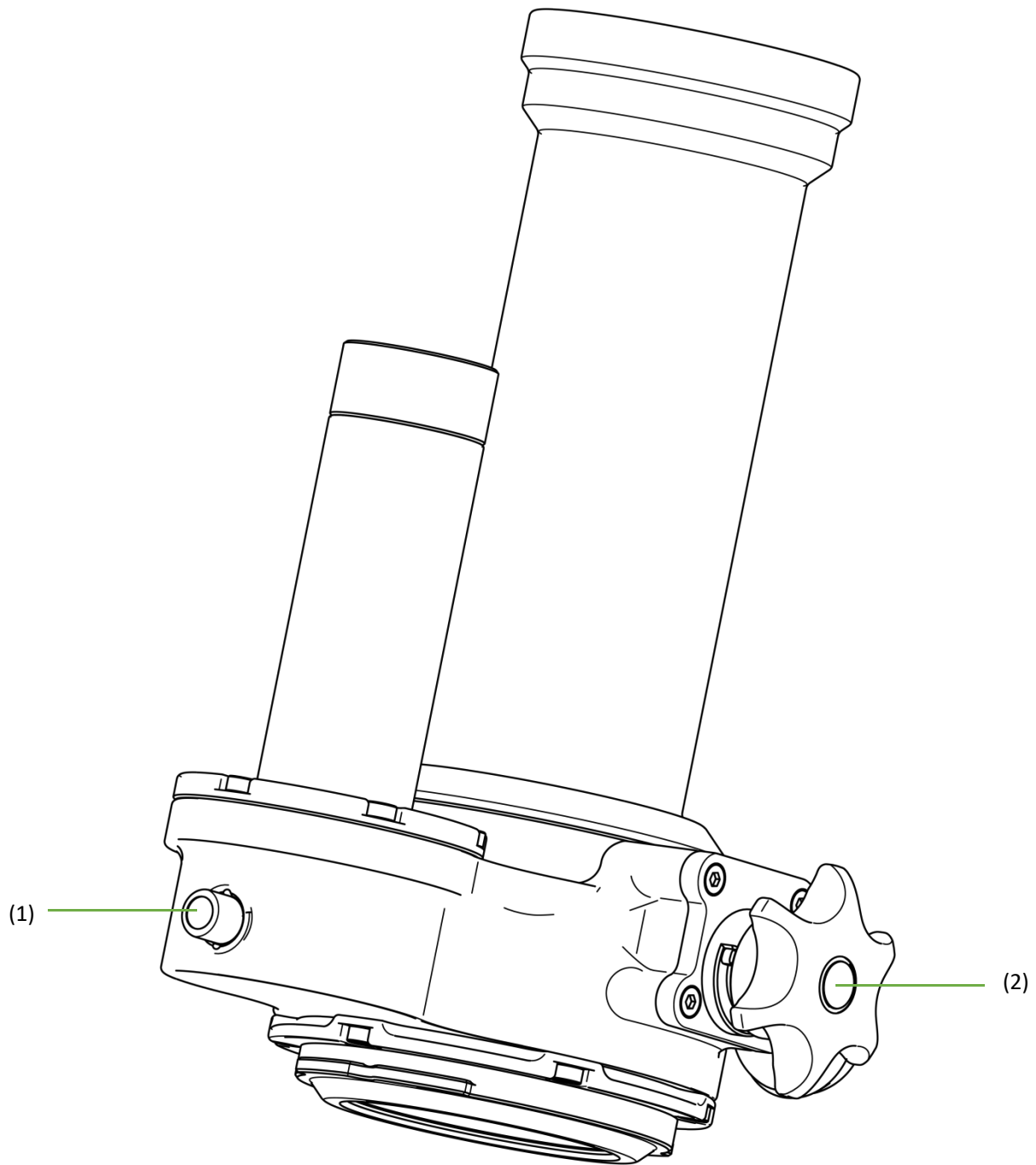


Lock for mounting ball of strobe

Product Features

- Aluminum anodized housing
- Body length :210mm
- Main body of SOFT , in air / in water \approx 972g / 270g
 - Floating ring , in air / in water \approx 33g / -110g
 - Main body + Floating ring , in air / in water \approx 1005g / 160g
 - Dock for INON Z330 , in air / in water \approx 205g / 135g
- Ball mount , in air / in water \approx 33g / 20g
- Battery \approx 46g
- Suggest using a standard 18650 lithium battery, 3.7V, 67mm length, If battery length is over 70mm, it cannot work on the SOFT of this version, and needs a specially designed battery slot.
- Depth rating: maximum -100m (suggest using above -50m)
- Light spot diameter in water: 8mm-50mm(130mm from end of SOFT)
- Focal length :130mm
- Best shooting range: 120mm-180mm
- Aiming light spot brightness: 180lumen
- Aiming light will automatically switch off for 1.2 second, in 2/100,000 second after sensing strobe flash,then automatically .
- With one 18650 lithium battery, 3.7V, 3400mAH, it can work continuously for at least 16 hours.
- Passed FCC CE RoHS testing.
- Suggest only turning on aiming light in water, to avoid overheating.
- Suggested operating temperature: -20 centigrade to +32 centigrade.Maximum +37 centigrade.
- Please pay attention to adjusting the 2 screws on the DOCK after installation,so it has the right tightness to ensure smooth attaching and detaching of the SOFT body.

Part Names and Functions

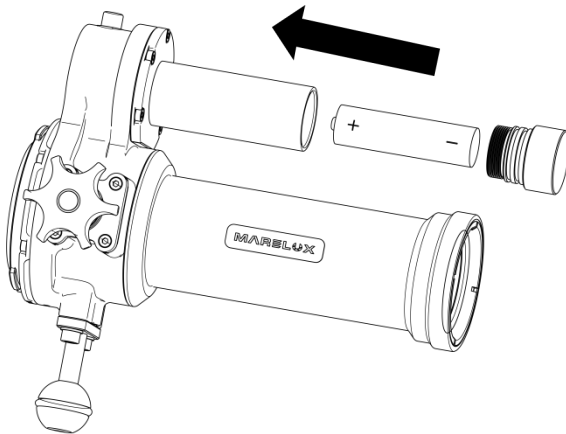


(1) Power switch

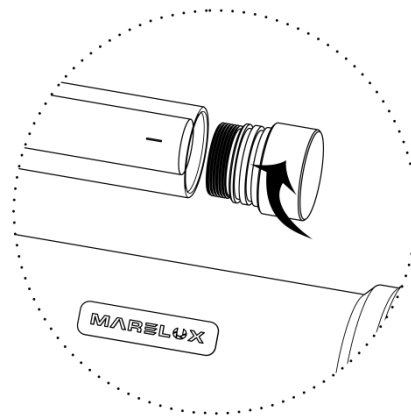
(2) Beam spot adjustment knob

Installation

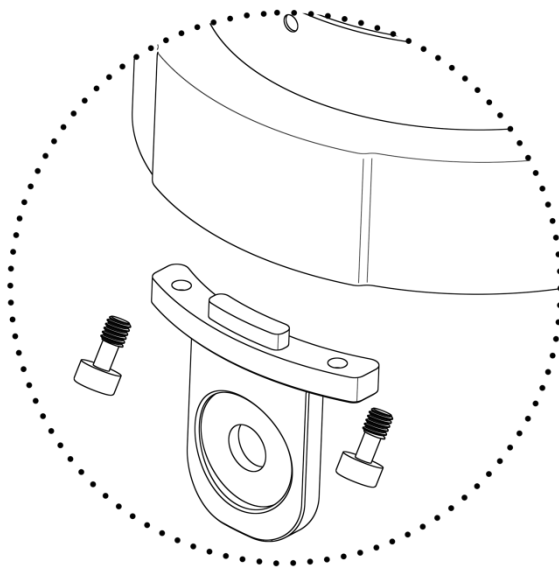
This product requires one 18650 Lithium battery



Remove the battery end cap by rotating it counter clockwise and insert the battery in the right direction.

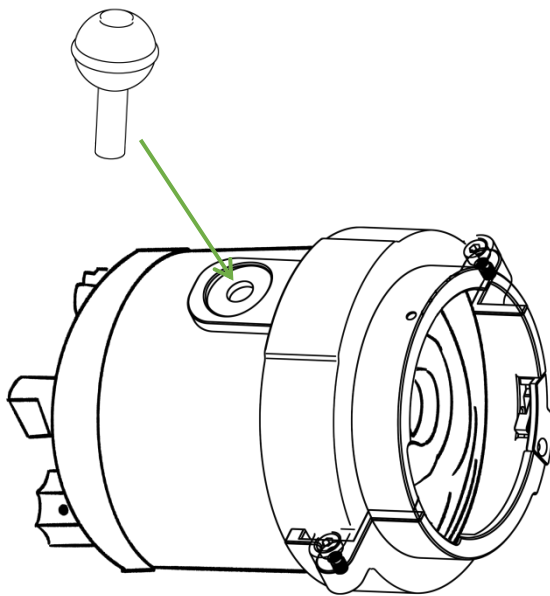
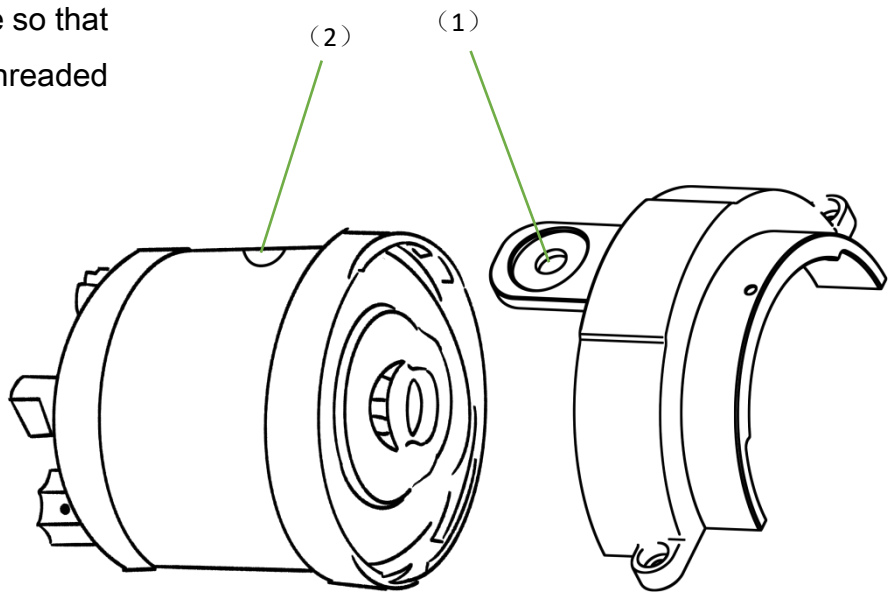


Attach the battery end cap by rotating it clockwise.

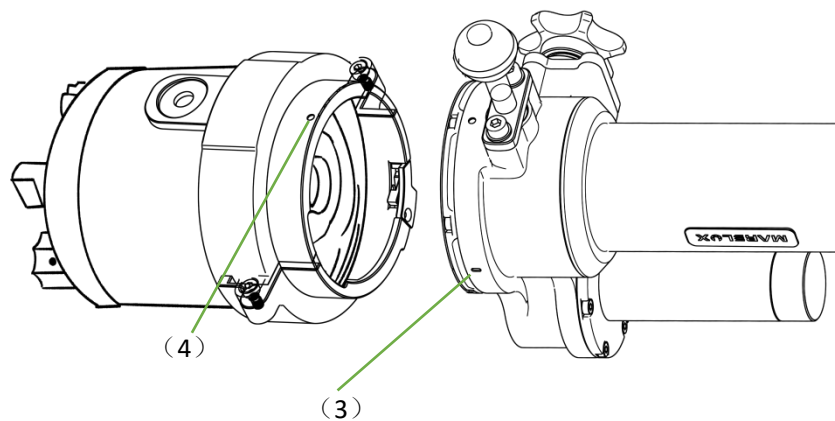


Use screws to attach the mounting ball lock to the dock and tighten them.

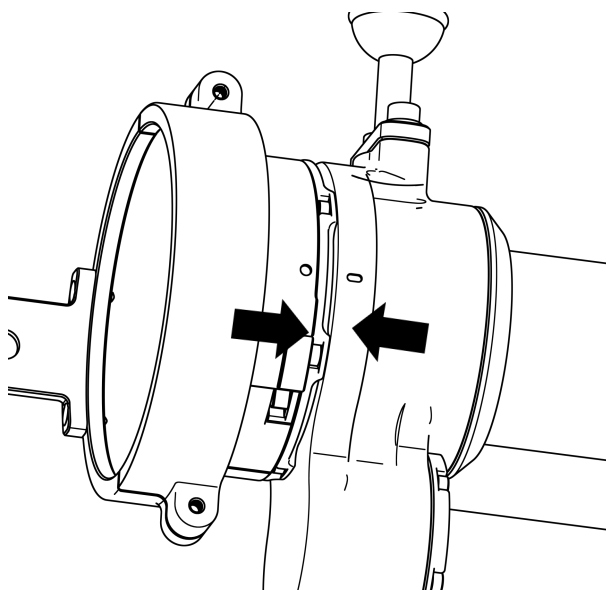
Attach the dock to the strobe so that the lock (1) aligns to the threaded hole (2) of the strobe.



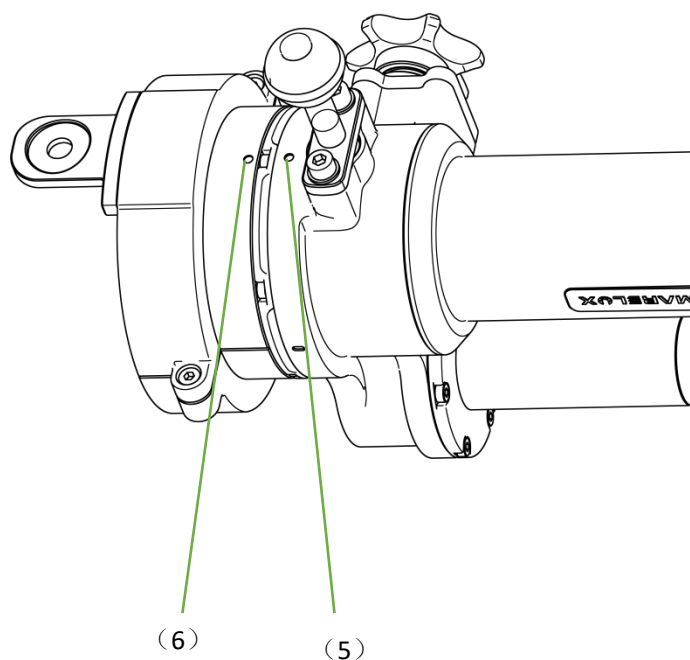
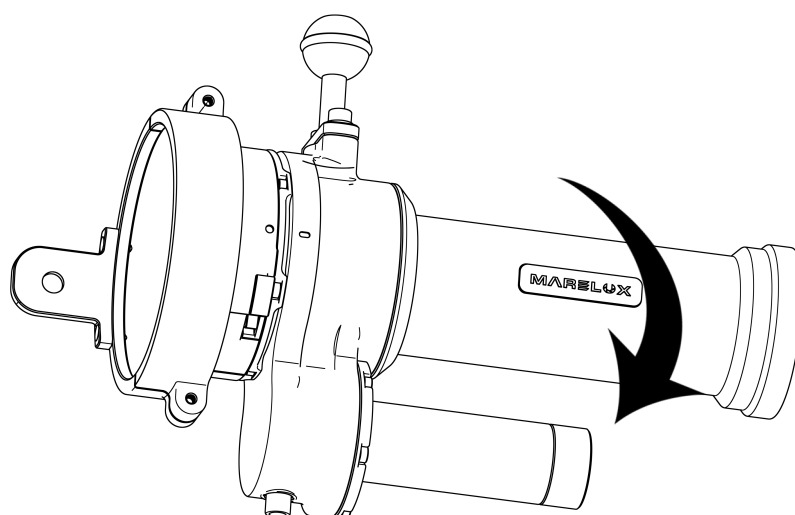
Attach the mounting ball to the strobe.



Align the white bar(3) on the SOFT to the white dot(4) on the dock and attach the SOFT to the dock with the direction shown in Figure

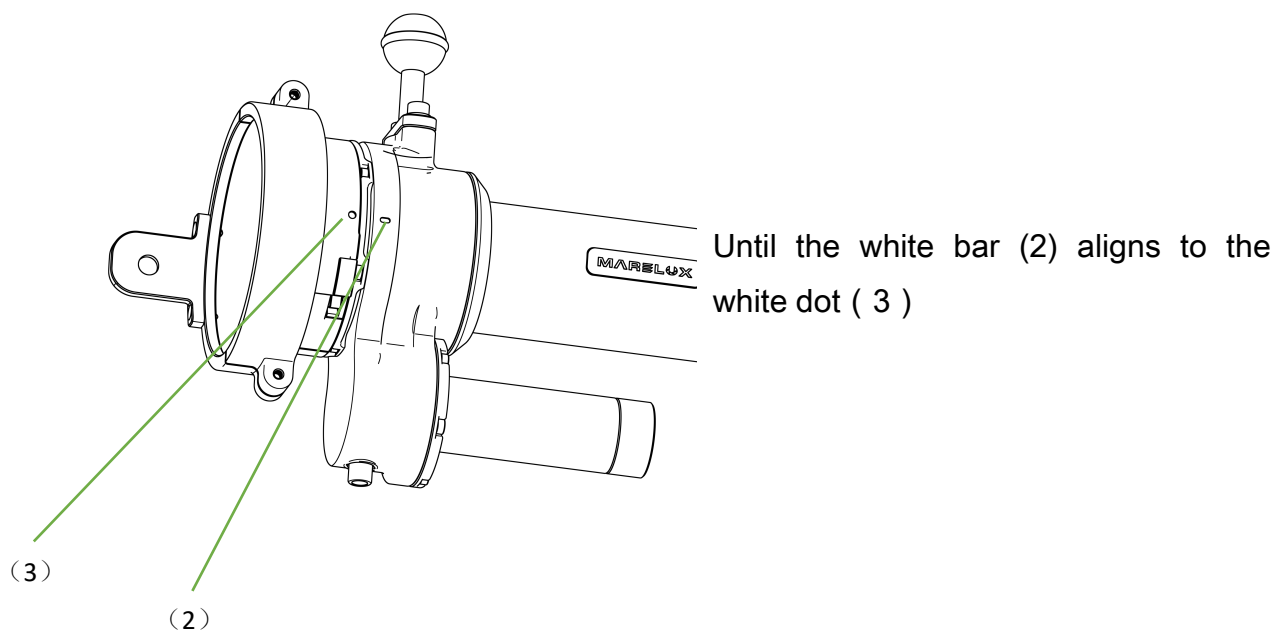
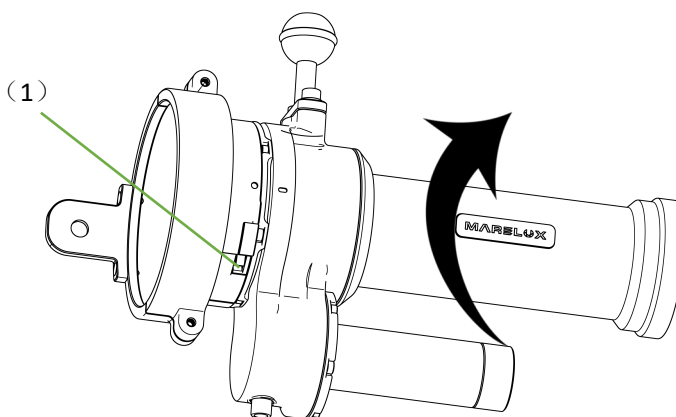


Rotate the SOFT clockwise until the white dot of the SOFT aligns to the white dot of the dock.

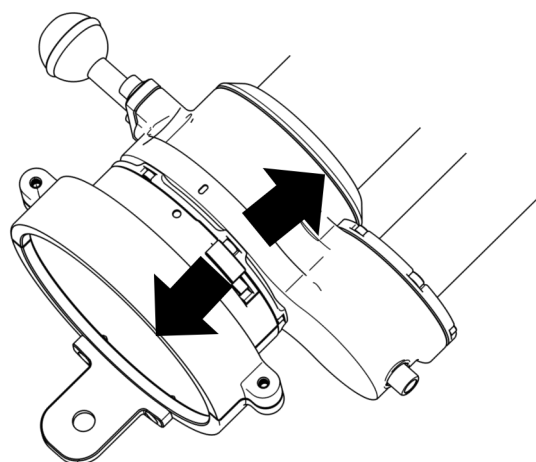


Uninstallation

Press the lock button (1) and rotate the SOFT counterclockwise

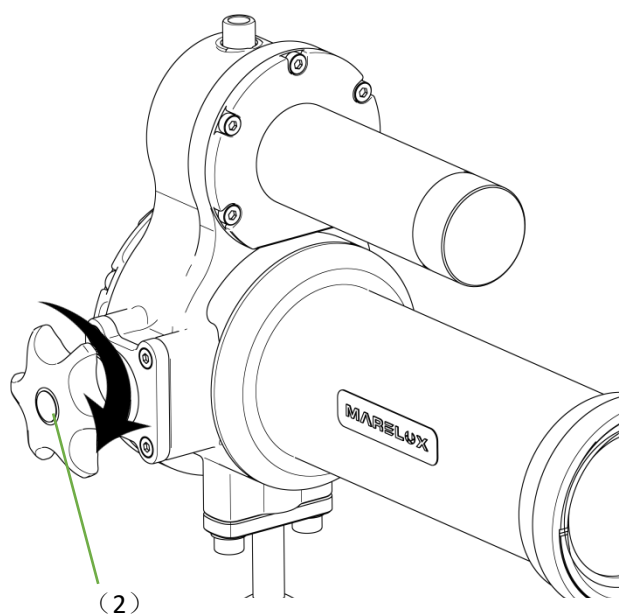
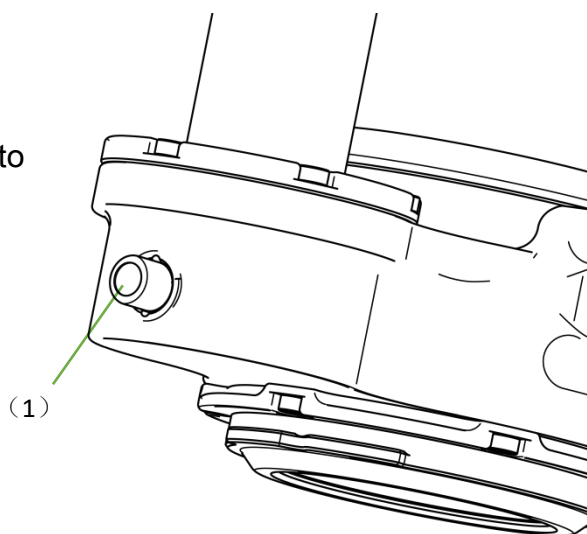


Separate the SOFT main body from the dock in the direction shown in the figure



Usage

Press this button (1) to
turn on the aiming light



Turn this knob (2) to adjust
beam coverage and suit to
different subjects or intended
effect

Maintenance And Storage

- After each underwater use, always remove this product from the strobe and soak it in fresh water for several hours to dissolve salt buildup. Wipe off water with soft cloth and let it dry in shaded and well-ventilated area.
- Periodically apply grease on the O-Ring of the battery end cap to prevent problems caused by salt buildup or electrical corrosion.
- A diffuser is not usable in combination with this product.
- Do not tighten screws too much to avoid damage on the screw holes.

Warranty

1. Marelux provides 2 years warranty for its housing body, cable (such as fiber cable and HDMI cable), and 1 year warranty for electronic parts and components made of silicon, rubber and plastic.

2. Repairs caused by following reasons will be charged by Marelux even during the 2 years warranty period.

- Damage from misuse, incorrect maintenance or storage not complying with the specifications and notices in this user manual ;
- Damage from falling or inappropriate placement of the product ;
- Damage caused by repair, maintenance, dismantlement, modification or cleaning by any unauthorized vendor or service center by Marelux;
- Product without authentic Marelux serial number, or with erased, distorted or falsified serial number;
- Damage caused by usage of non Marelux recommended accessories, parts, components from other makers or suppliers, such as Flash Trigger, Cable, Dome Port, Extension Ring, Converter and etc ;
- Damage caused by misuse or mistreatment by human, or by natural disaster or other situations of force majeure ;
- Malfunction or damage caused by erosion due to not cleaning the SOFT;

3. Batteries, lubricants and other consumable supplies are not in warranty.

4. All parts and components replaced from the product in the warranty service should belong to Marelux.

5. Marelux is not responsible for and will not compensate any collateral damages or financial losses caused by using Marelux products, such as income or fees related to the use of Marelux products.

- Warranty is only provided to products sold inside the service territory of the distributor or reseller.

- Products purchased and used for rental business are not included in warranty.

- Products will lose warranty immediately after unauthorized repair or modification.

- The warranty terms above are made for Marelux customers to conduct free warranty service and repair, and have no restriction to any legal rights that customers shall possess.