

SOLA PRODUCT LINE 2012



	SOLA DIVE			SOLA PHOTO			SOLA VIDEO		
Model	Sola Dive 500	Sola Dive 800	Sola Dive 1200	Sola Photo 500	Sola Photo 800	Sola Photo 1200	Sola Video 1200	Sola Video 2000	Sola Video 4000
Weight (grams/oz)	05 / 10.7	305 / 10.7	305 / 10.7	283 / 9.9	283 / 9.9	283 / 9.9	266 / 9.3	283 / 9.9	808 / 28.5 3
Lumen Output Flood Beam	N/A	800	1200	500	800	1200	1200	2000	4000
Lumen Output Spot Beam	500	500	500	N/A	N/A	N/A	500	N/A	N/A
Red Lumen Output	N/A	N/A	N/A	N/A	226	226	N/A	N/A	N/A
Run Time on High (minutes)									
Flood Beam	N/A	65	65	100	65	65	65	50	50
Run Time on High (minutes)									
Spot Beam	70	70	70	N/A	N/A	N/A	70	N/A	N/A
Run Time on High (minutes)									
Red Beam	N/A	N/A	N/A	N/A	210	210	N/A	N/A	N/A
Charge Time (minutes)	150	150	150	150	150	150	150	150	150
Flood Beam Angle (degrees)	56	56	56	56	56	56	56	70	80
Spot Beam Angle (degrees)	N/A	12	12	N/A	N/A	N/A	12	N/A	N/A
Depth Rated	300ft/90m	300ft/90m	300ft/90m	300ft/90m	300ft/90m	300ft/90m	300ft/90m	300ft/90m	300ft/90m
Included Mounts	Hand strap	Hand strap	Hand strap & pistol grip	Ball	Ball	Ball	1/2" Loc-line	1" Ball & 1/2" Loc-line	1" Ball (3/4" loc-line w/travel pack)

lightandmotion.com

300 Cannery Row, Monterey CA 93940
831.645.1525 • www.lightandmotion.com
sales@lightandmotion.com



910-0346-A
Product
specifications
subject to change.



2012

Sola...Simply Better



Simply the Best

Simply Green



Environmentally Conscious

- 2005-2010 W.R.A.P. Award Winner (Waste Reduction Award)
- 2010 Cool California Award, for our reduced carbon footprint.
- 2008 Small Business of the Year Award.
- Our products are proudly designed and assembled on Cannery Row in Monterey, California.



Certifiable

- We are the only company who publishes our independent lumen test results.
- We test and publish our competitors lumen test results.
- Lumen Tests available at: www.uwimaging.com/sola1200d.html



Rechargeable

- Save Money: Rechargeable Li-ion batteries cost more initially but provide up to 500 uses.
- Protect the Environment: batteries contain corrosive materials and heavy metals and are banned from most landfills.
- We are a member of the RBRC recycling program.





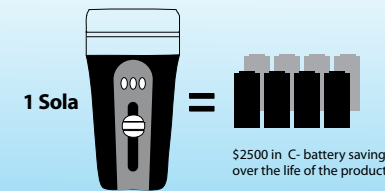
SOLA LIGHTS *Simply Superior*

The Sola Advantages



UNMATCHED POWER & SIZE:

- Sola delivers more raw power than any hand held light on the market.
- At 285 grams (10 ounces), Sola delivers twice the lumens at ¼ of the weight of the leading competitor.
- Sola's small size has no effect on your airline baggage allowance.



RECHARGABLE BATTERY SAVES YOU MONEY:

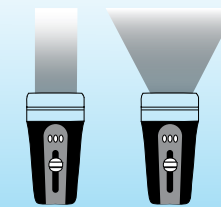
- The Sola's 500 charge cycles, saves you from purchasing over 2,000 C-cell batteries needed for the 2nd best selling dive light, a savings of \$2,500 over the life of the light.



UNRIVALED VERSATILITY:

- All of the Sola 2012 mounts are completely interchangeable. *
- Use it as a video light on your first dive, then switch mounts and use it as your primary dive light on your second dive.

* Except for the Sola 4000



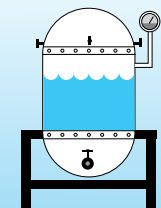
ADVANCED DUAL LIGHT BEAM SOLUTION:

- Sola Dive and Video lights come with a spot light and a flood light option.
- Sola Photo lights come with a white flood light/red flood light option.
- Sola is the only variable beam light currently on the market.



SOLA IS SMART:

- Sola has a dashboard displaying the power output, battery status and charge status, it never leaves you guessing.
- Sola regulates its own voltage, so the lumen output remains constant during use.
- Sola 2012 comes with an SOS mode.



SUPREME RELIABILITY 100% FACTORY SEALED:

- We challenge anyone to match Sola's flood-free performance.
- With its factory sealed battery and pressure tested to 300', Sola has a 99.2% No-Flood Rating.
- Never need to replace an o-ring, an LED or a battery...ever.



SOLA DIVE LIGHTS *Simply Smarter*

New for 2012: *Customize your Sola!*

- The Sola Dive line has an improved hand mount, angled to point naturally where you want it.
- The new Sola 800 boasts 30% more power.
- A remarkable streamlined T-Handle.
- An elegantly sculpted pistol grip.

- These mounts were all designed to create an exact fit for this dynamic Sola line.
- Measured on lumens per dollar or lumens per gram, the Sola is the smartest light out there.



Sola Dive 1200

2011- *Scuba Diving Magazine* TESTERS CHOICE AWARD

- The Sola Dive 1200 delivers a walloping 1200 lumen flood to your dive (as bright as your car headlamp).
- The Dive 1200 comes with a flood and spot beam. Ships standard with the new hand mount, lanyard and pistol grip.



Sola Dive 800

- Debuting this year, this 800 lumen flood beam and 500 lumen spot combination light delivers one of the most impressive beams in a hand held light.
- The Dive 800 ships standard with and the comfy new hand mount and lanyard.



Sola Dive 500

- For a more conventional experience, the Sola Dive 500 is the pinnacle of any recreational light and features a 12 degree spot beam.
- No other light its size can deliver a true, regulated 500 lumens for consistent brightness throughout the dive.
- The Dive 500 ships standard with the new hand mount and lanyard.



SOLA PHOTO LIGHTS *Simply Focused*

New for 2012:

- The Sola Photo 1200 with three levels of red light.
- The Sola Photo 800 lumen light delivers 30% more power than last years model.

- Sola Photo lights are the quintessential focus light.
- Soft even-patterned flood of white light makes photos pop.
- Tap the magnetic slider to engage three levels of red light for night-time focusing without scaring your subject.



Sola Photo 1200

- Please welcome the Sola Photo 1200 lumen focus/video light, up to 1200 lumens white or 226 lumens red with a tap of the slider.
- Powerful enough to shoot video with your photo rig yet still soft enough not to scare the fish as a focus light.
- Sola Photo 1200 comes standard with 3 levels of white light / red light modes and ships with a 1" inch ball mount.



Sola Photo 800

- The Sola Photo 800 is the perfect companion for compact photo systems.
- Shoot video or use it as focus light, either way, your going to love the results.
- Sola Photo 800 comes standard with 3 levels of white light/ red light modes, and ships with a 1" inch ball mount.



Sola Photo 500

- The Sola Photo 500 is the perfect light for your compact photo or video camera.
- You get 500 lumens of clean even flood light in a tiny rechargeable package.
- Purchase a Light & Motion accessory camera tray kit and the Sola Photo 500 will work with any camera housing that comes with a standard tripod mount.
- Sola Photo 500 comes standard with three levels of white light, and ships with 1" inch ball mount.



SOLA VIDEO LIGHTS *Simply Brilliant*

New for 2012:

- The Sola Video 2000 with a 70 degree flood.



Sola Video 2000

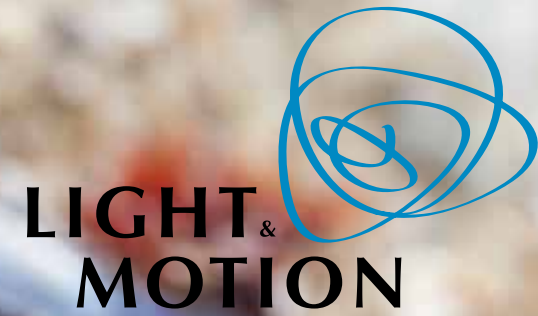
- We have packed 2000 lumens into a 265 gram body (9.5 oz.).
- We took all that power and widened the beam to 70 degrees to support the wider optics often used in video.*
- And because it is the same size as the rest of the Sola line, you can also use it as a dive light or a focus light. Ships standard with loc line and ball mount.

* There is no spot beam function in this light



Sola Video 1200

- Our top seller from last year, the Sola Video 1200 is the essential light to have in your video arsenal.
- This light features both a 12 degree spot and 60 degree flood providing unmatched flexibility in a single light; ideal when searching for subjects, or shooting those jaw dropping macro scenes. Ships standard with loc line mount.



SOLA 4000 *Simply Daylight*

Get ready to be astounded by the new Sola 4000. There won't be a reef or overhang left in the dark.



Sola 4000

- The Sola 4000 is the perfect light for shooting video on a DSLR system. The Sola 4000 meets the needs of large sensors, small camera apertures and wide-angle lenses. It delivers 4000 lumens across 80 degree beam enabling you to capture dynamic HD video.
- Coming in at 808 grams (1.75 lbs) and nearly neutral, the Sola 4000 hardly makes an impact on your rig in-or-out of the water.
- The Sola 4000 is factory-sealed with a state-of-the-art lithium rechargeable battery, a battery status indicator light, and seven different lumen levels, so you can switch from 500 lumens to 4000 lumens at 1/3 stop increments with a quick tap of the slider.
- Sola 4000 meets all the TSA safety requirements with a detachable front plate, to avoid hassle at the airport and ships standard with a 1" ball mount.



Accessory Cyan Filter

Why do you need a cyan filter?

- The custom color in this cyan filter was developed over a year of underwater testing. This custom filter allows the shooter to enhance wide angle scenes with fill light in the foreground that looks natural against filtered sunlight, white balanced at depth.
- With the background lit by the sun, the cyan filter engaged Sola 4000 will enhance the foreground without creating any unnatural hot spots or color inconsistencies.



Sola 4000 Two Pack

Sola 4000 Two Pack ships standard with:

- two Sola 4000 lights
- two chargers
- two ball mounts
- two cyan accessory filters
- includes Pelican case



SOLA ACCESSORIES *Simply Flexible*

Buy one Sola and you get three lights in one! Here is proof that when you buy a Sola, you just don't need any other light in your dive kit. Each 2012 Sola* is compatible with every mount listed below. * Except the Sola 4000



Pistol grip
Part #: 800-0171



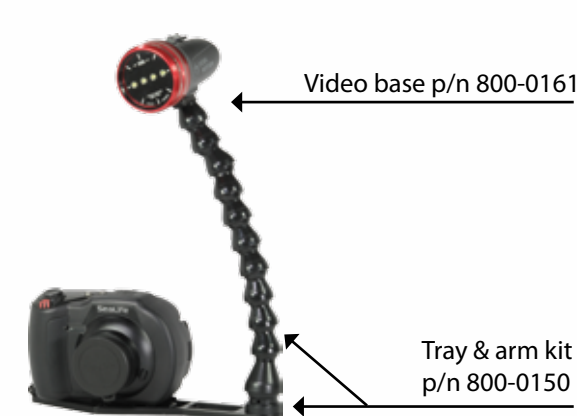
Hand mount
Part #: 800-0168



T-Handle
Part #: 800-0174

SOLA TRAY COMBINATIONS *Simply Compatible*

Sola is the perfect lighting companion for any photo or video camera. It's constant light source allows cameras to adjust exposure and focus automatically. Supports all standard 1/4-20" tripod mount systems. Sola works with all Locline and 1" ball mount arms.



Sola Photo 500 with Sea Life Camera.



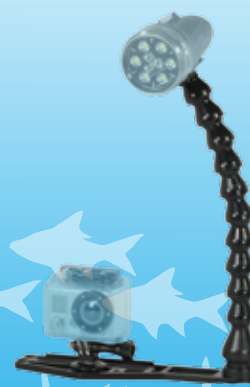
Sola Dive 1200 with GoPro Camera.



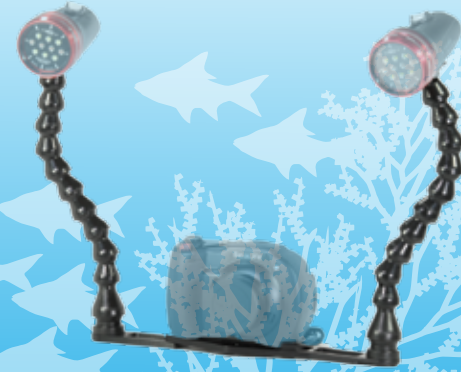
Photo base
Part #: 800-0160



Video base
Part #: 800-0161



Tray & arm kit
Part #: 800-0150



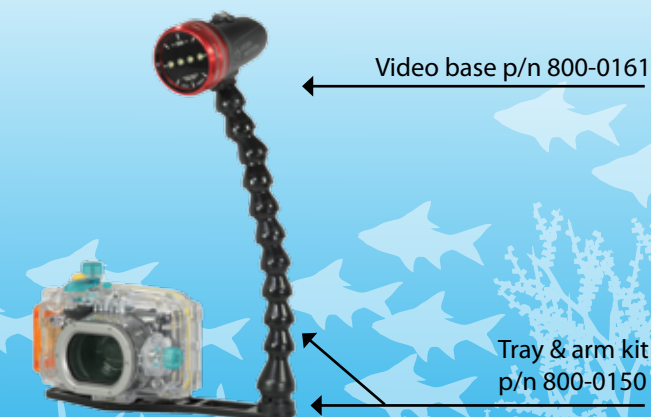
Tray extension kit
Includes only left arm & tray extension piece tray
Part #: 800-0170



D-ring kit
Part #: 800-0172



Sola Photo 500 with Ikelite housing and mount.



Sola Photo 500 with Generic housing.